

Ruth Hutchinson

Product Design BA (Hons)

Graduated 2021

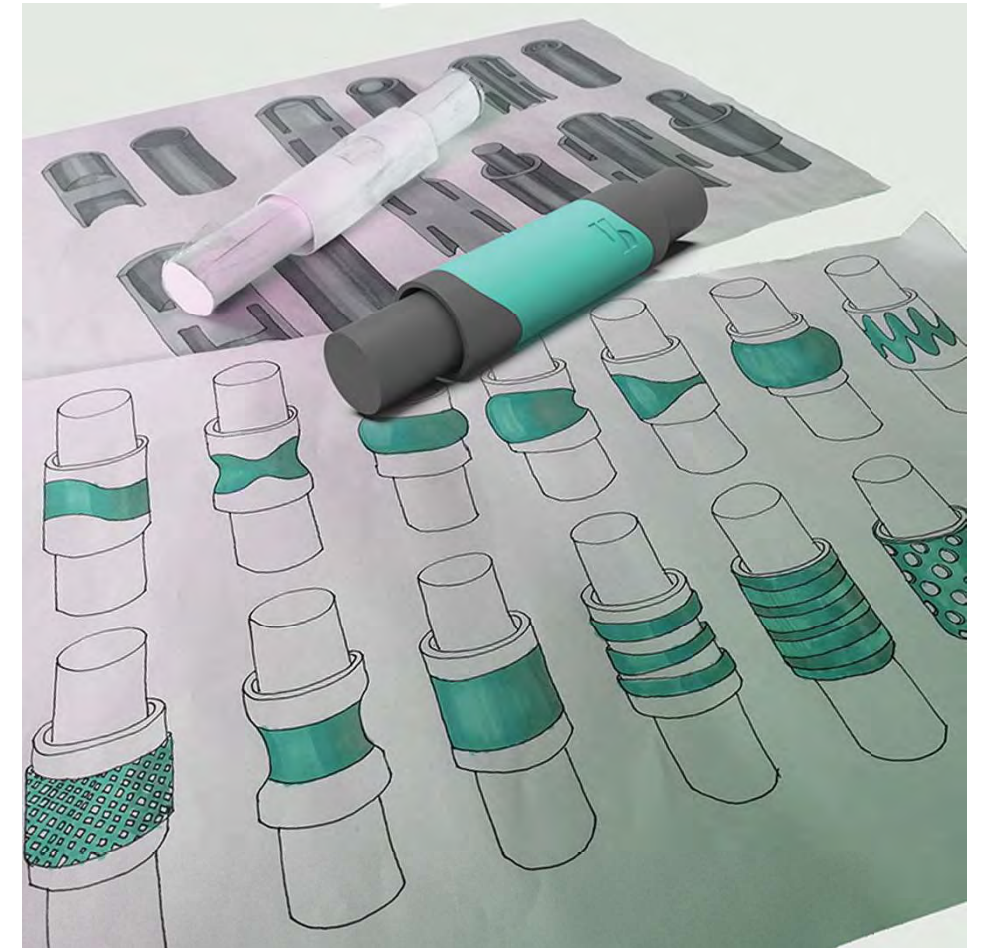
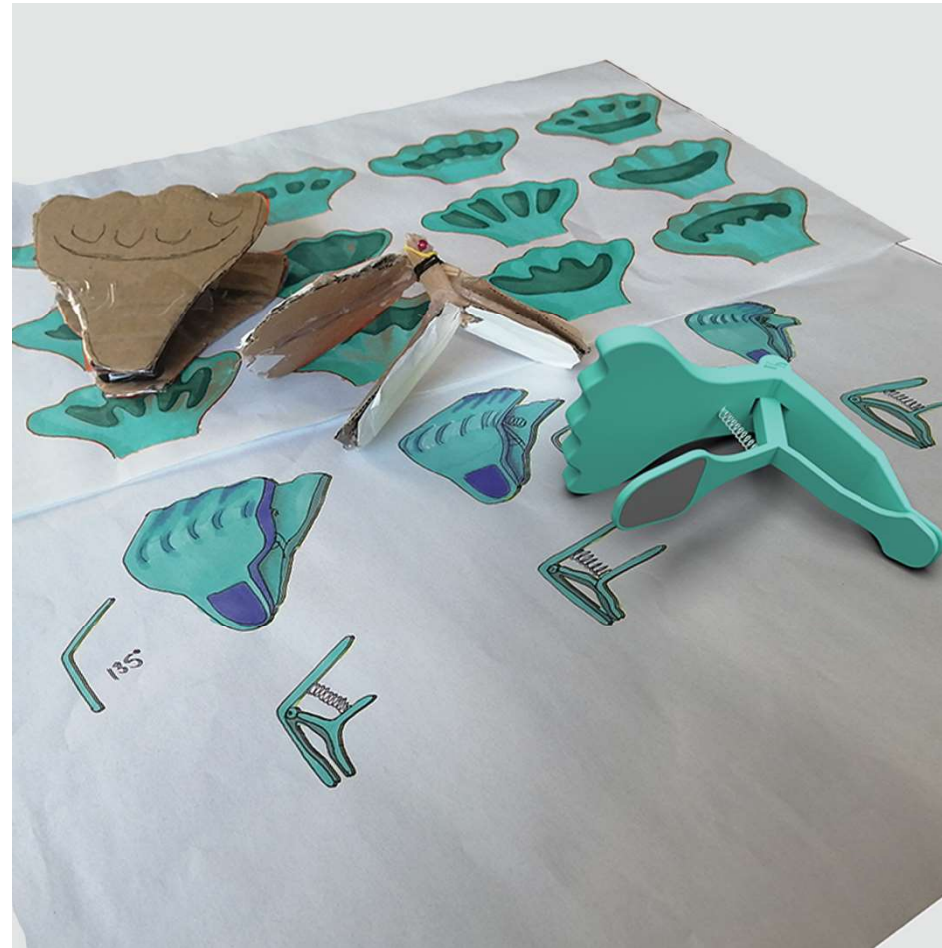
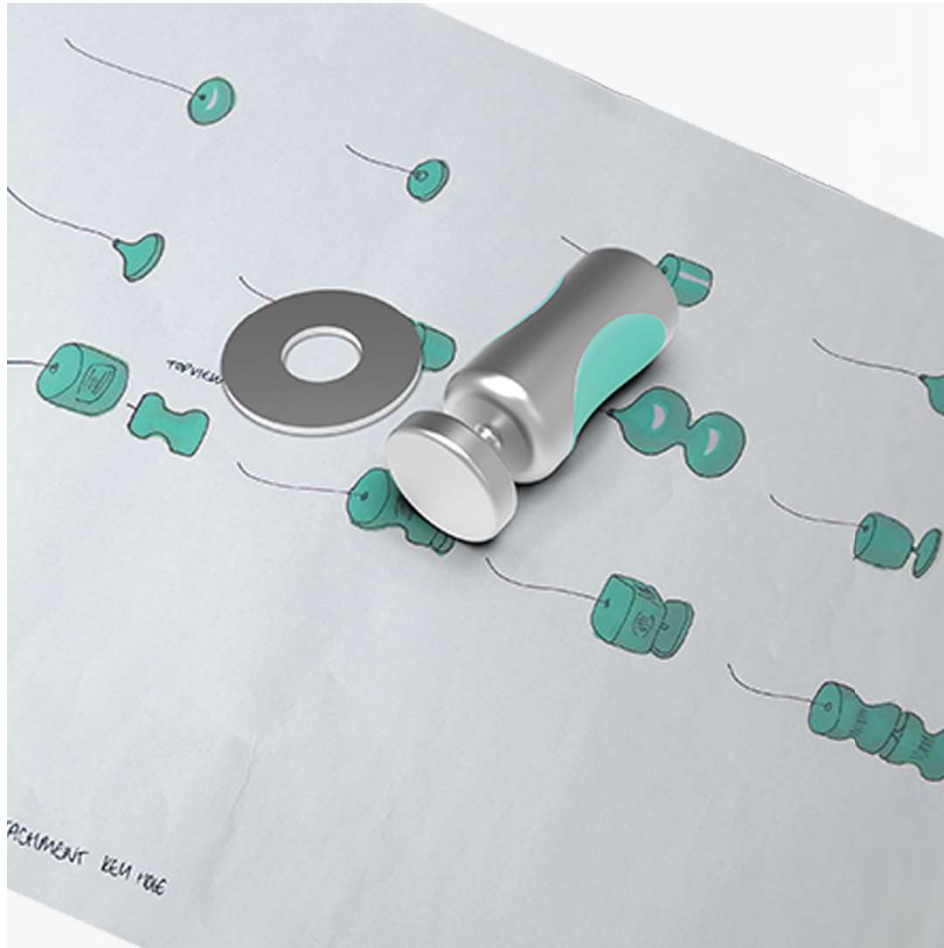
University of Huddersfield

AIRFLO



Airflo is a modular drying laundry solution targeted towards those who are older or have limited mobility. The grips are wider for those who struggle with fine motor control and have grips to assist with holding and to prevent clothes from marking.

AIRFLO



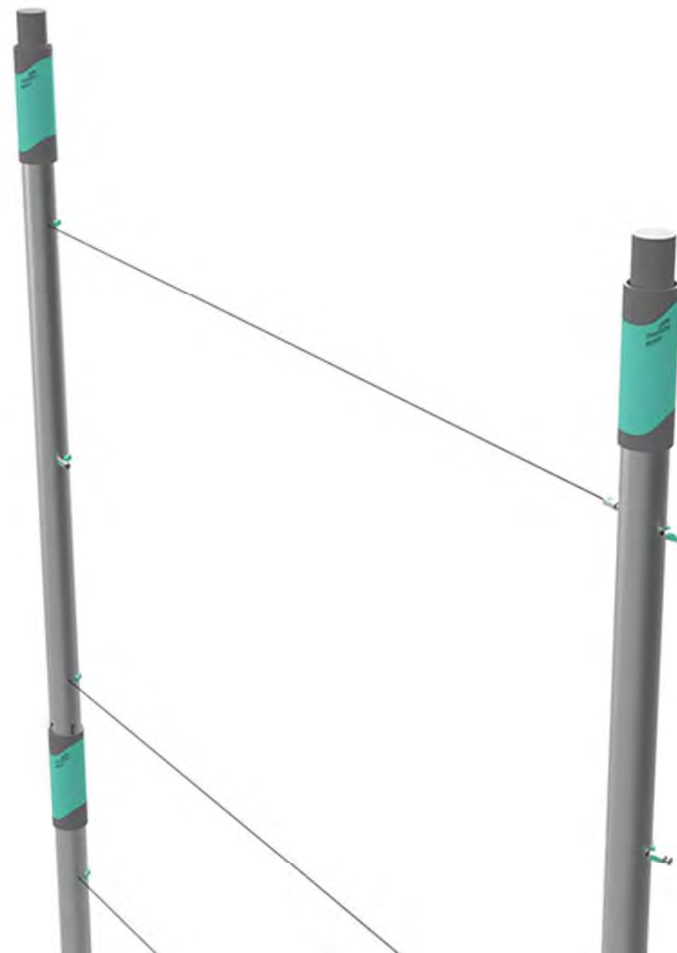
For part of this project the initial stages of the design was focused on drawings and then moved to concept models. Through testing and feedback from users the pieces were further developed before being rendered using CAD.

AIRFLO



Photoshop was used to market this product by presenting it being used by people. The clothing of the people and background were altered so the consumer is focused more on the product than by distracting backgrounds, logos and colours,

AIRFLO



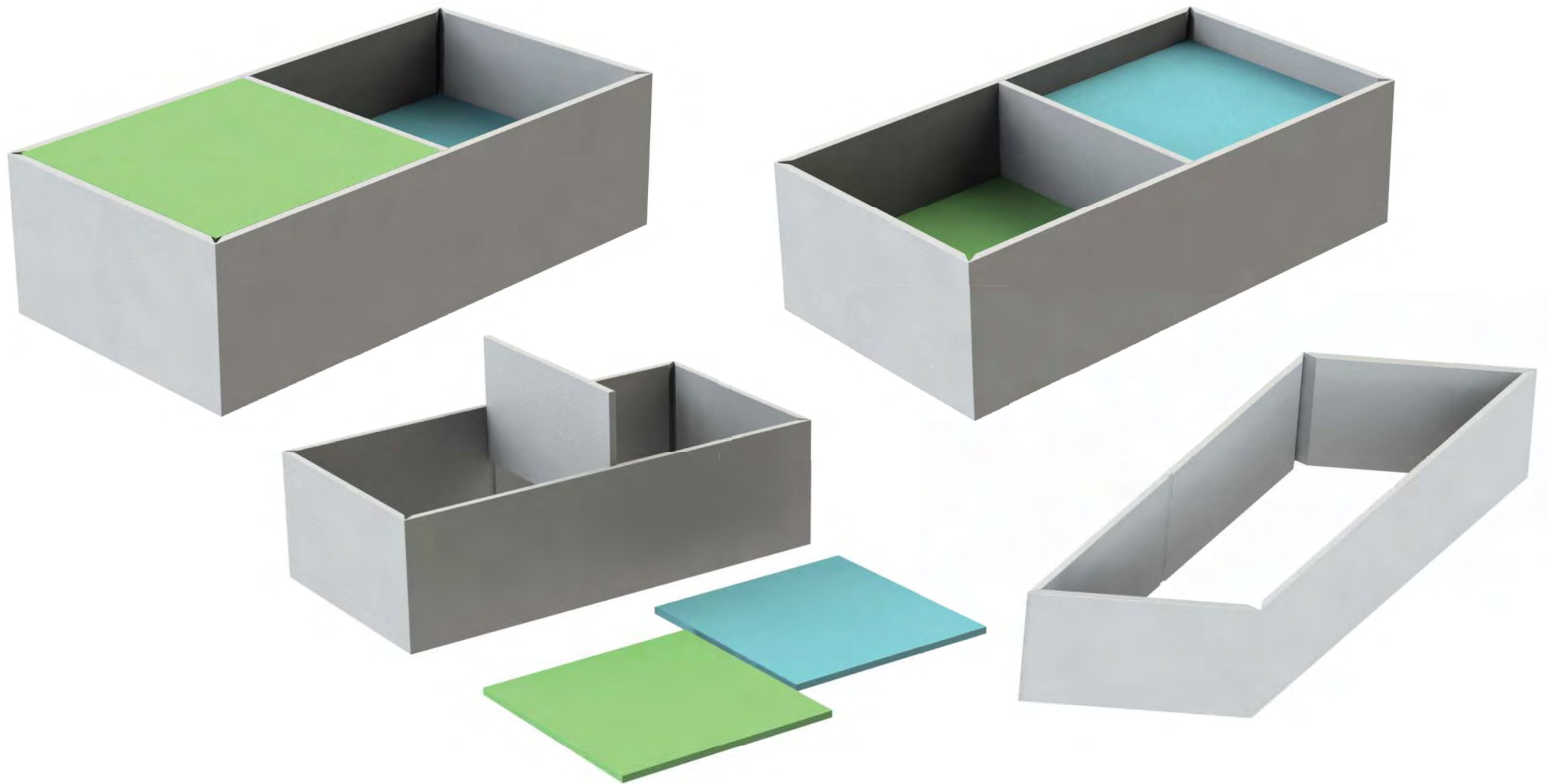
As part of this design the packaging was designed. The cardboard flatpack was created using solidworks sheet metal and rendered in keyshot with the packaging design. Keyshot was also used to present an exploded view of the internal components.

ORGANIC WASTE BIN



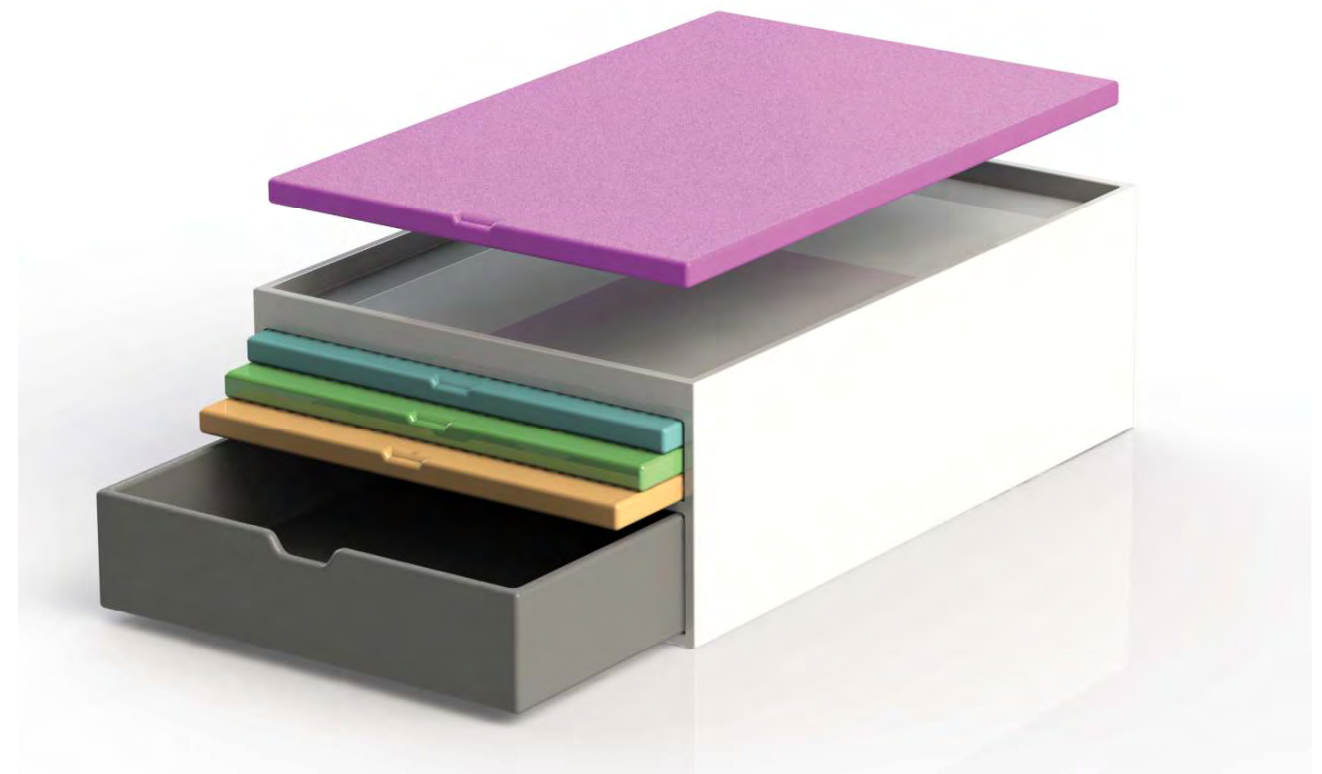
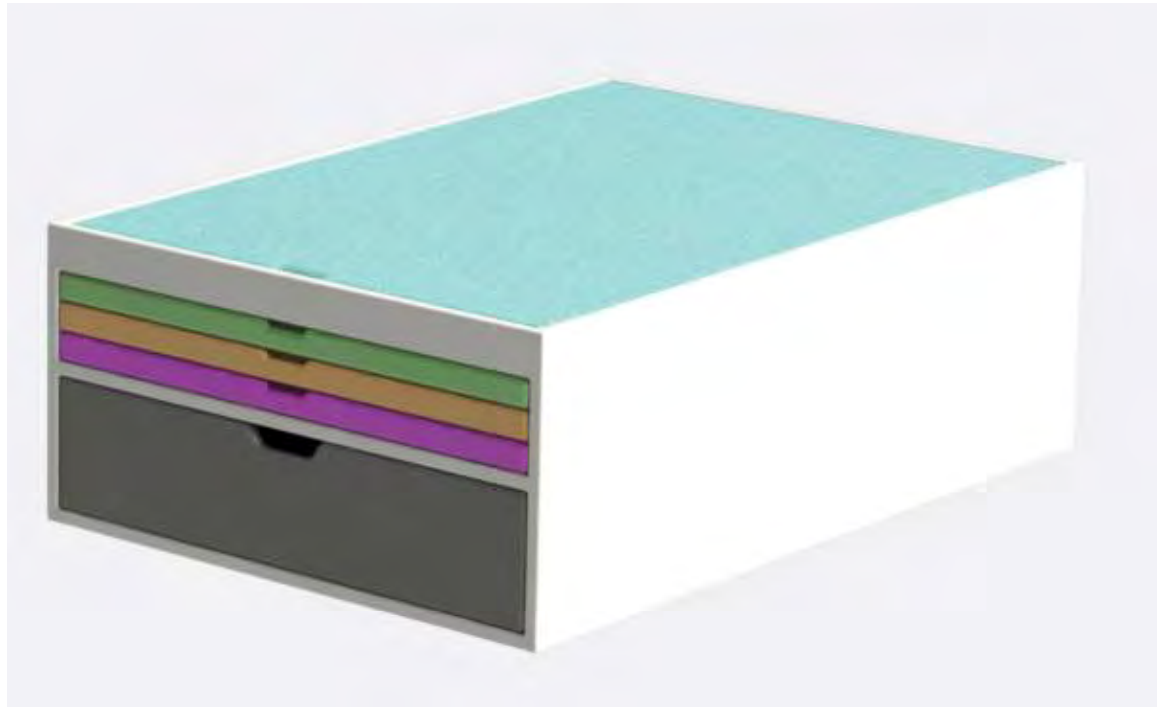
In the first term of final year I looked at four concepts to solve different problems. The first presented was an organic waste bin for a kitchen countertop. The lid slides out of a top piece to prevent food falling on the floor when interacting with the lid or bin.

MULTI LEVEL BOARD



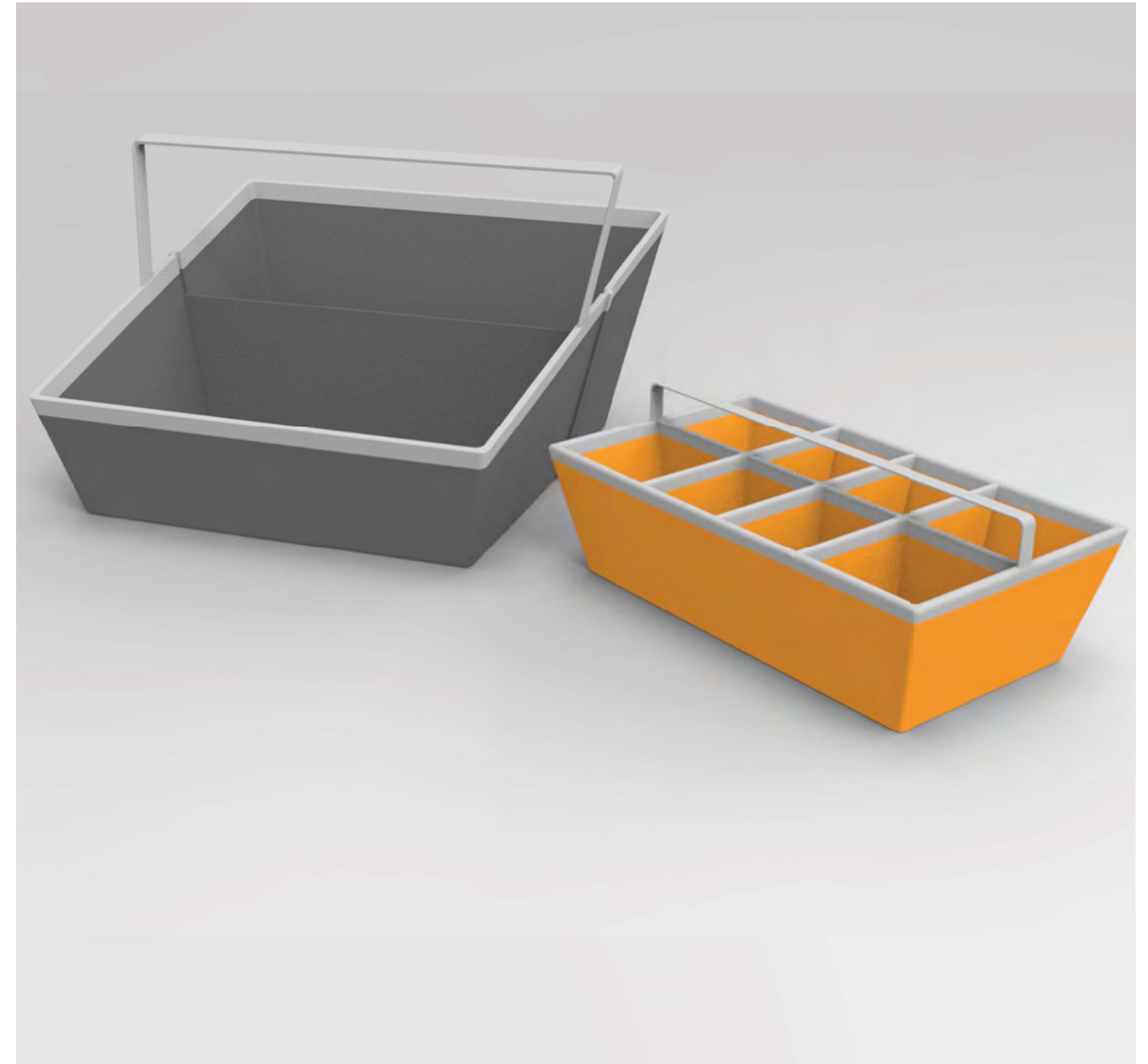
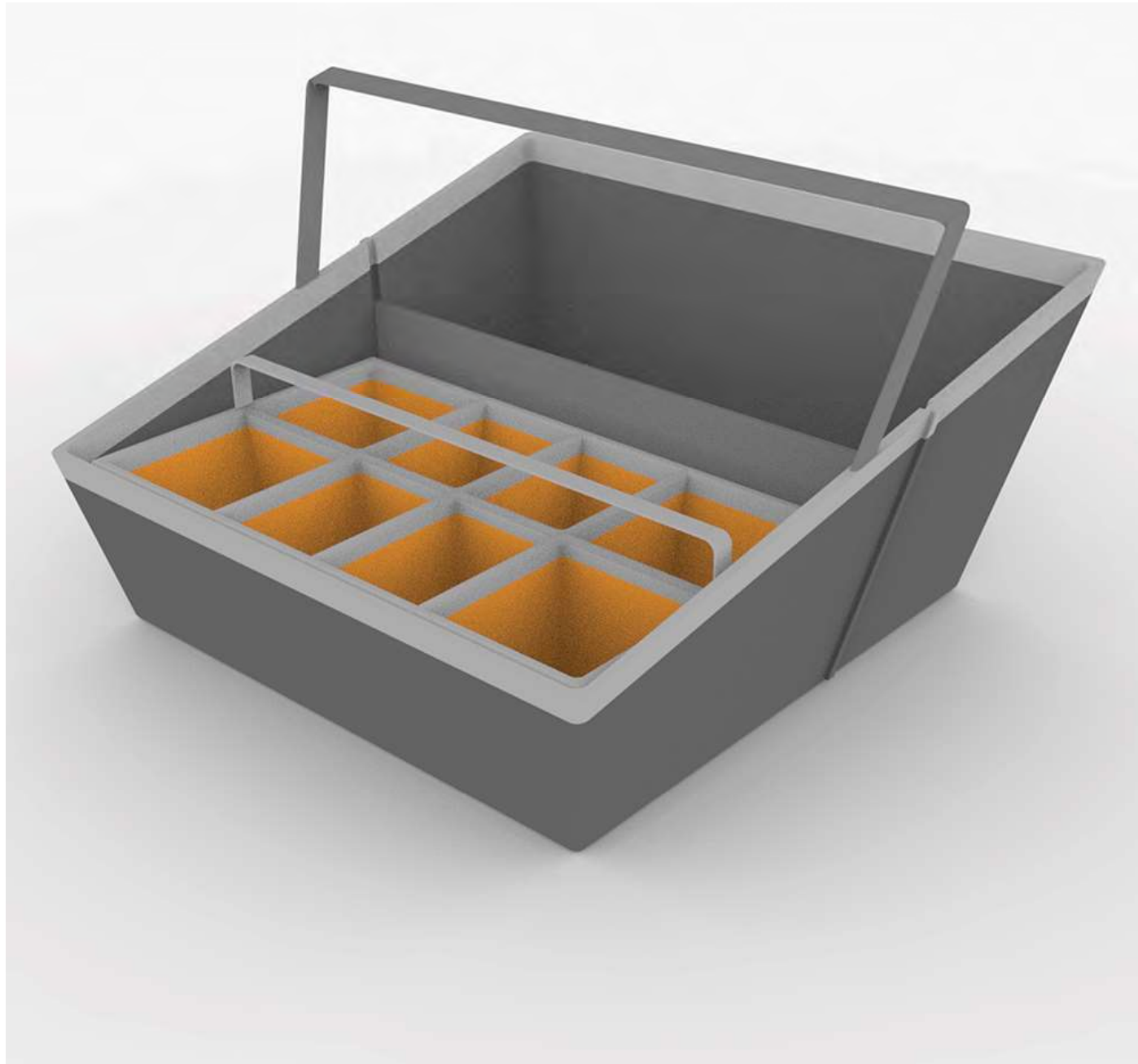
The second concept was a multi level chopping board. This allows waste to be separated from foods being used in cooking to allows for food and waste to be moved aorund the kitchen easily. The frame features living hinges to allow for easy storage.

AIRFLO



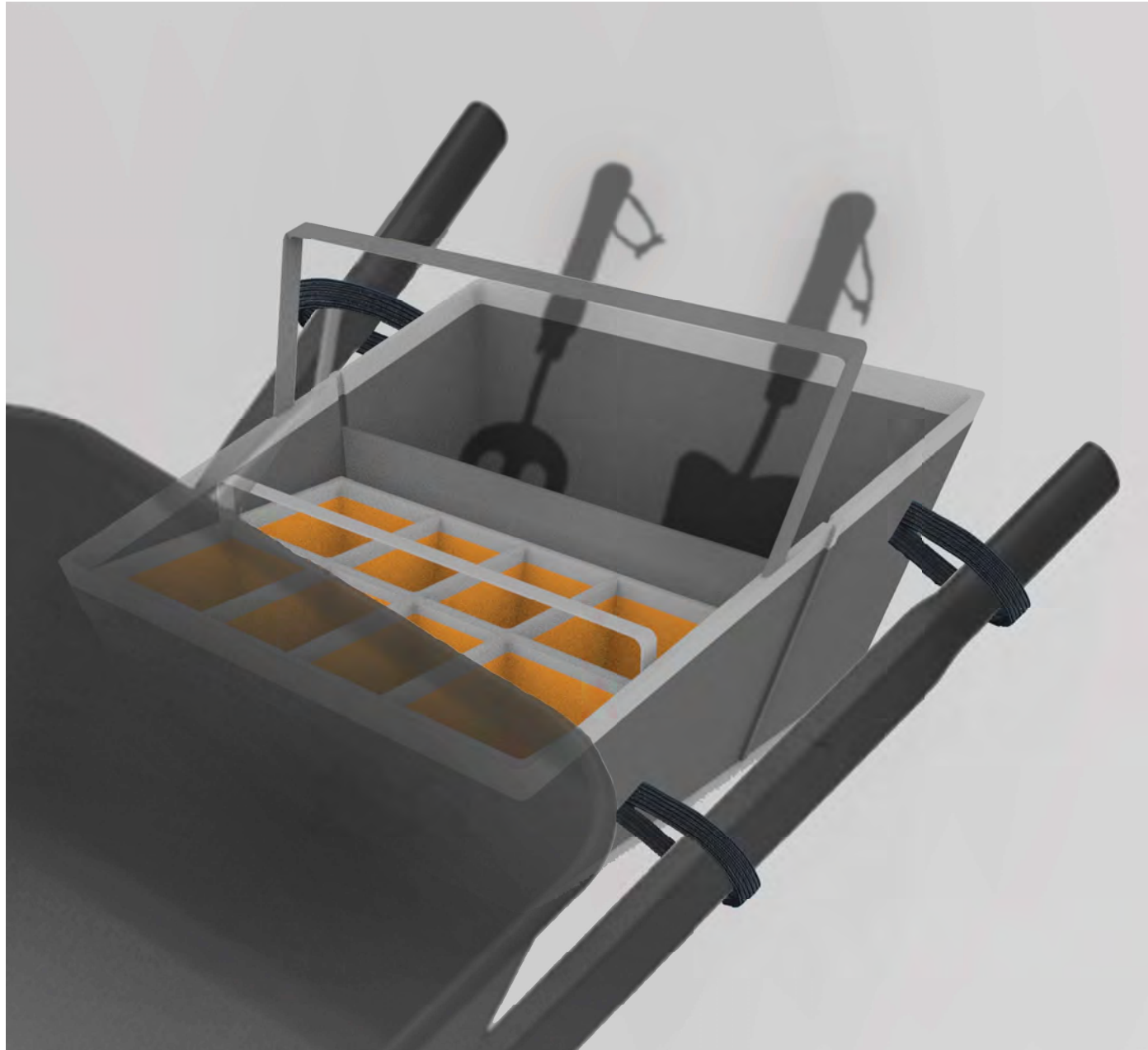
This product is used to keep waste and food separate as well as promoting not contaminating boards with different products. The boards fit into the top and can be easily interchanged when switching food types.

WHEELBARROW TRAY



Wheelbarrow tray designed as part of second year University brief : improving health, well-being or encouraging exercise, focusing on the longevity properties and effectiveness of plastics as a material and the benefits they bring to the modern world.

WHEELBARROW TRAY



Wheelbarrow tray designed as part of second year University brief : improving health, well-being or encouraging exercise, focusing on the longevity properties and effectiveness of plastics as a material and the benefits they bring to the modern world.

ELECTRIC FOLDING BIKE CONCEPT



Electric folding bike concept designed as part of a second year University project
This was rendered using Solidworks and Autodesk Alias and Keyshot using a Cad library in place of the ready made parts

ELECTRIC FOLDING BIKE CONCEPT



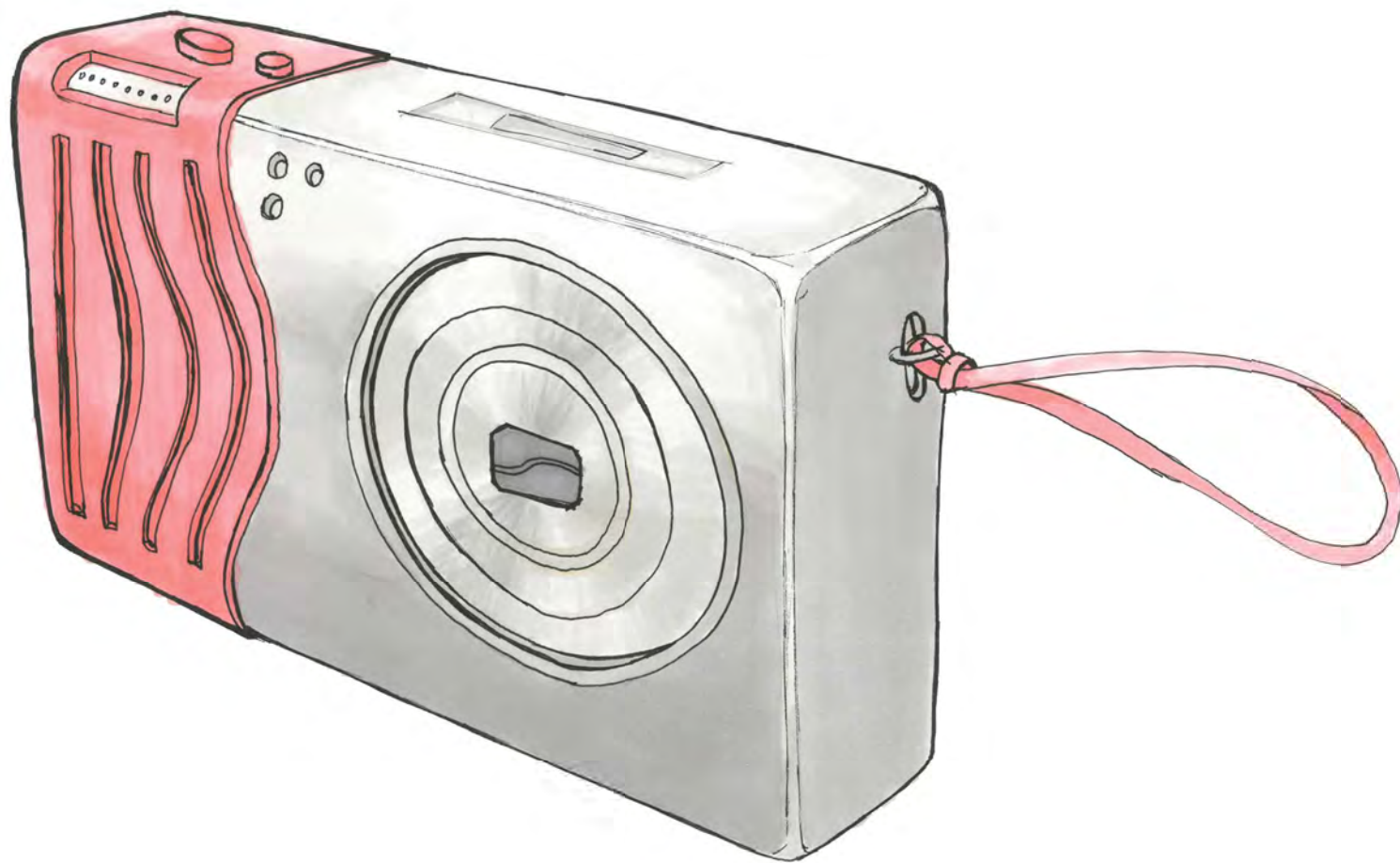
Electric folding bike concept designed as part of a second year University project
If this project was done again the hinge would be in a more suitable place for the render to work properly realistically

LADDER TRAY



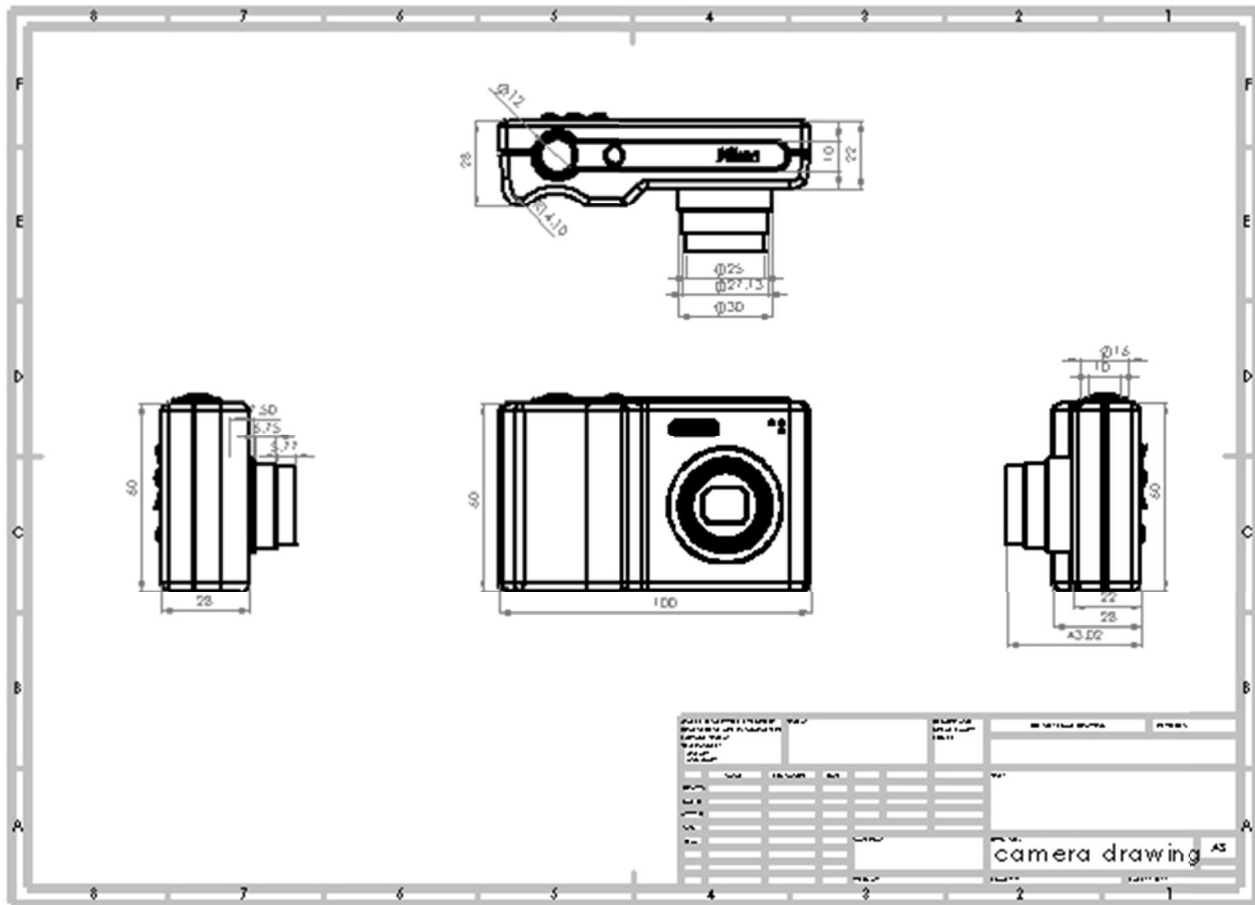
This ladder tray was part of a first year University brief given by VV'innovate to design a product for pasting wallpaper. The tray was designed by a project partner and the ladders and assembling of the images I rendered using Photoshop and KeyShot.

INITIAL CAMERA RENDERS



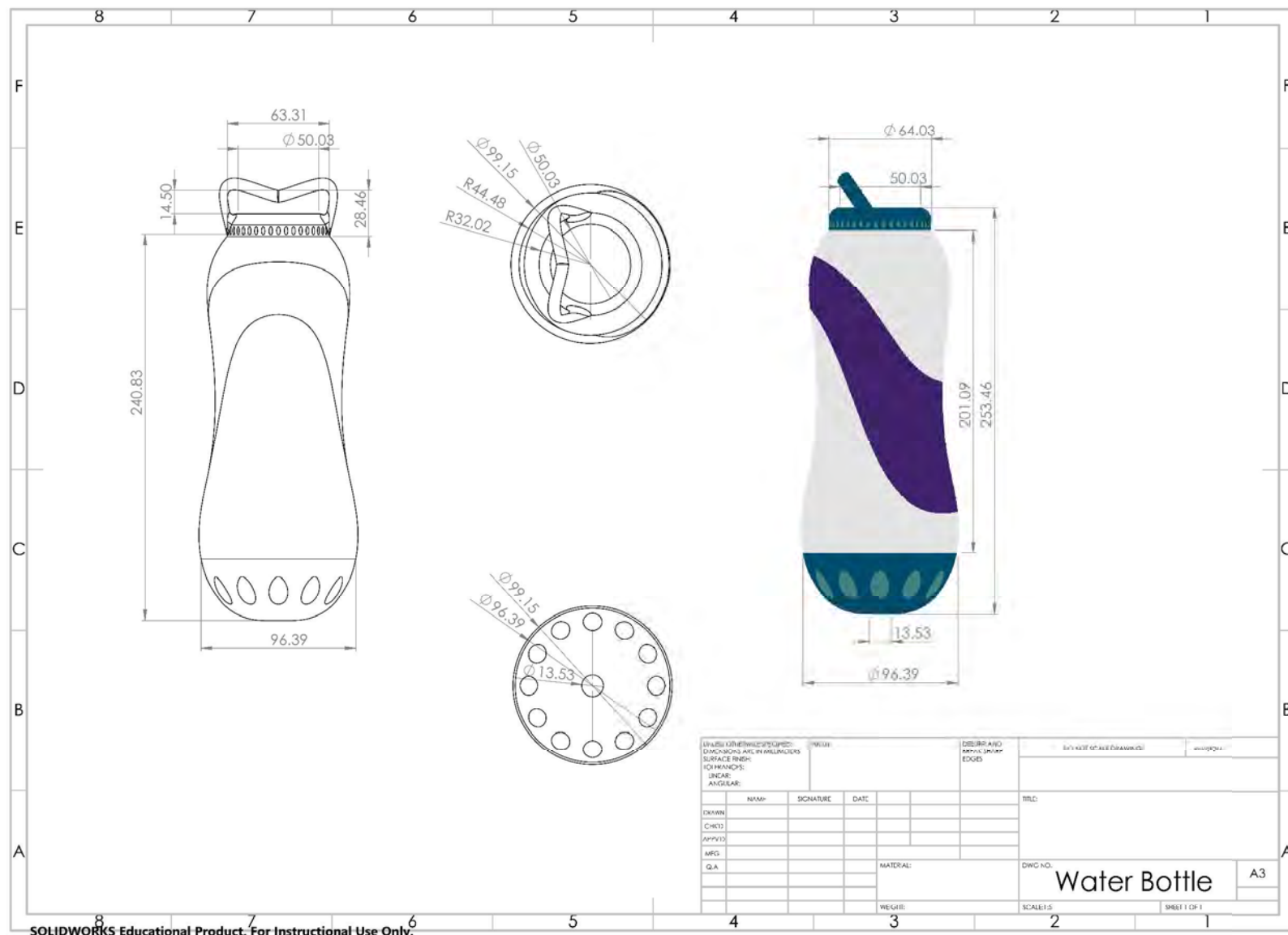
The first image shows a fineliner and marker render on paper showing a render of a camera with a casing design
The second image shows a render copying a nikon camera on photoshop to practice making realistic renders

CAMERA RENDER



The first image shows an engineering drawing of a 3D render of the camera using Solidworks.
The second image shows the front and the back view, also showing an image inserted using keyshot.

WATER BOTTLE DESIGN



This is a water bottle render using Solidworks and keyshot. It shows an engineering drawing of the product next to two renders showing different colour options of the product. This used splitlines to make the design and different planes for the handle.

HIGHLIGHTER RENDER



These highlighter renders were created to show differences between promarker and photoshop renders. They were created with the same initial line drawing. The photoshop render shows different colour varieties created using layers on photoshop.

RENDERS FOCUSING ON LIGHT



These two renders were created using a fine liner and promarker pens. These both focus on light and environment and how they affect the shadows and reflections on the product. Focusing on the pink environment reflecting on the kettle.

THE LIVING BENCH



This bench was made during my A-Level project. The design of this bench was created through sketches and then models and then materials were ordered to make the bench. This was made by me over the course of my final A-Level year.

CYCLE OF GOOD BRIEF



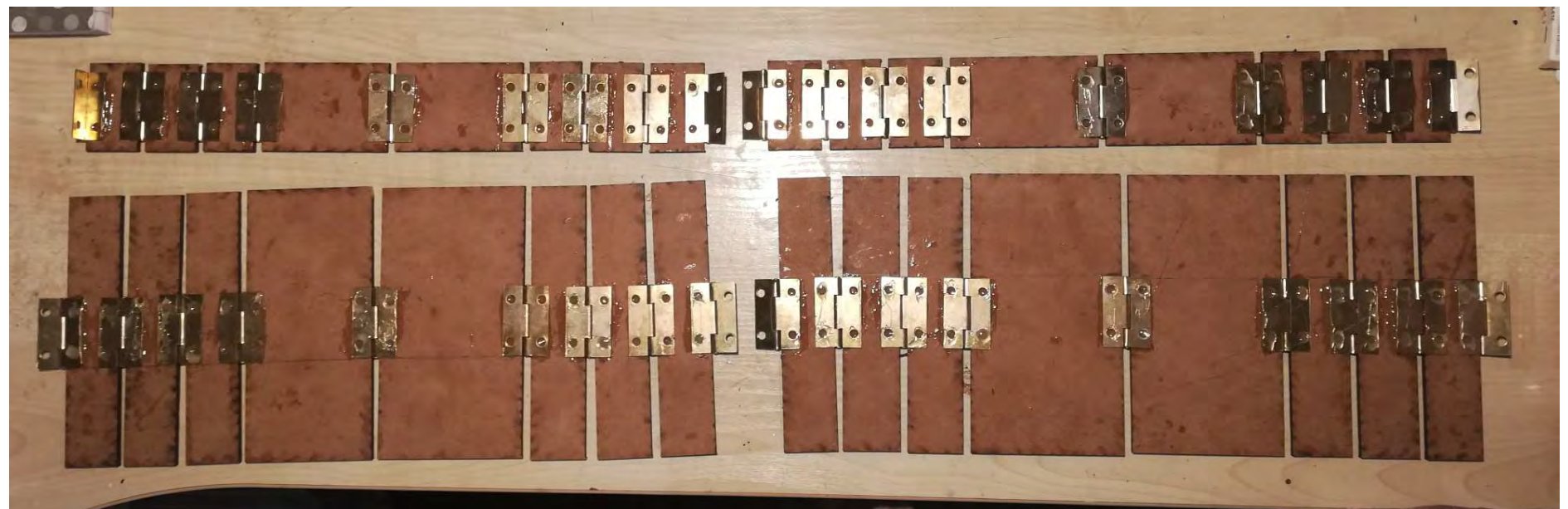
The brief was issued into designing a product made of old bicycle inner tubes. This is the mock up of my design which is a shelf that could be used for bicycle parts and other items which would appeal to those who have an interest in cycling.

SUSTAINABLE FASHION



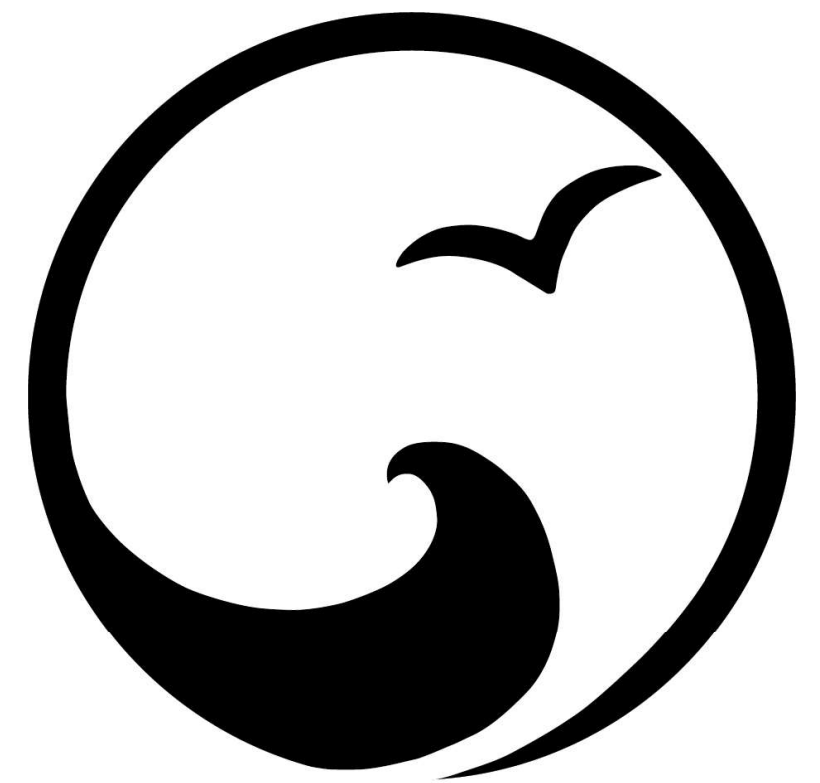
I was commissioned by an undergraduate fashion designer to make a wooden corset and belt as part of her collection. This was made using mdf and brass hinges to fit on the model tied together with twine at both sides.

SUSTAINABLE FASHION



The belt and corset were made by using a laser cutter to engrave wood grain onto each of the pieces and cut out each of the pieces. I used a wood stain and glued the hinges to the belt as it was too thin to screw into.

LOGO DESIGN



Through out University I have had the opportunity to support different groups with logo design. I have designed for the Huddersfield Christian Union, Huddersfield Town Repair Cafe and a local band.

GRAPHIC DESIGN

HUDDERSFIELD TOWN HALL
Kirklees Gospel
Carol Concert
The Gospel of Christmas

2nd December 2018
5:30pm - 8:00pm

Brought to you by the Christian groups and societies from University of Huddersfield and churches across Huddersfield

 Supporting fundraising for the Mayor of Kirklees official charities

<https://tickets.kirklees.gov.uk/search/huddersfield>

Featuring
Christmas Carols
Gospel Songs
Message of the Good news at Christmas

Evening will be crowned with free food and drinks donated by ASDA

You are warmly invited to join us in an evening of musical bliss, the first of it's kind in Kirklees

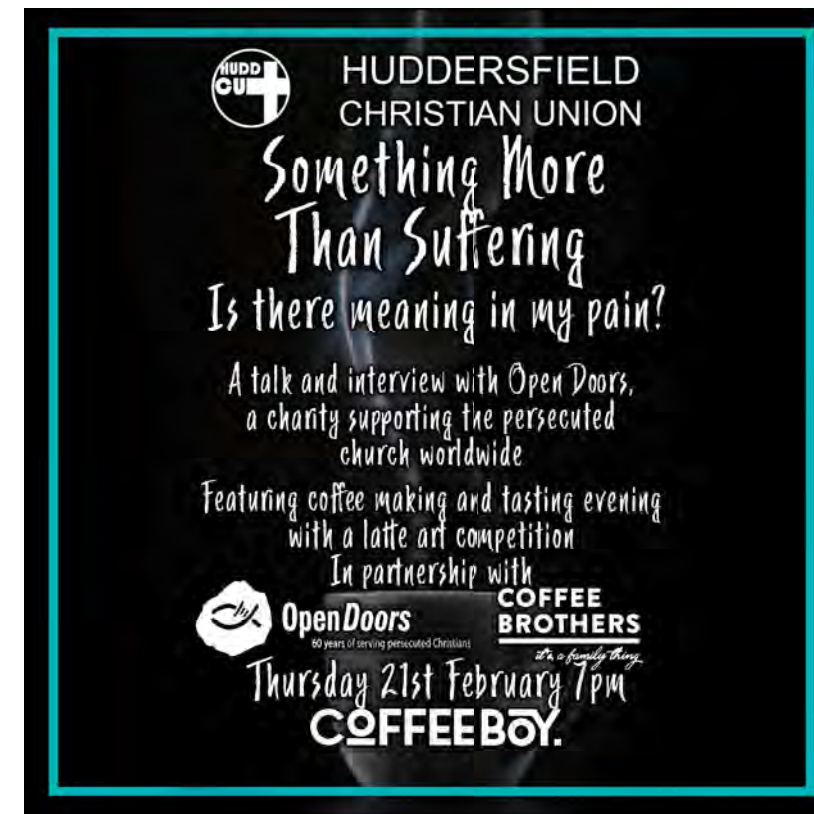
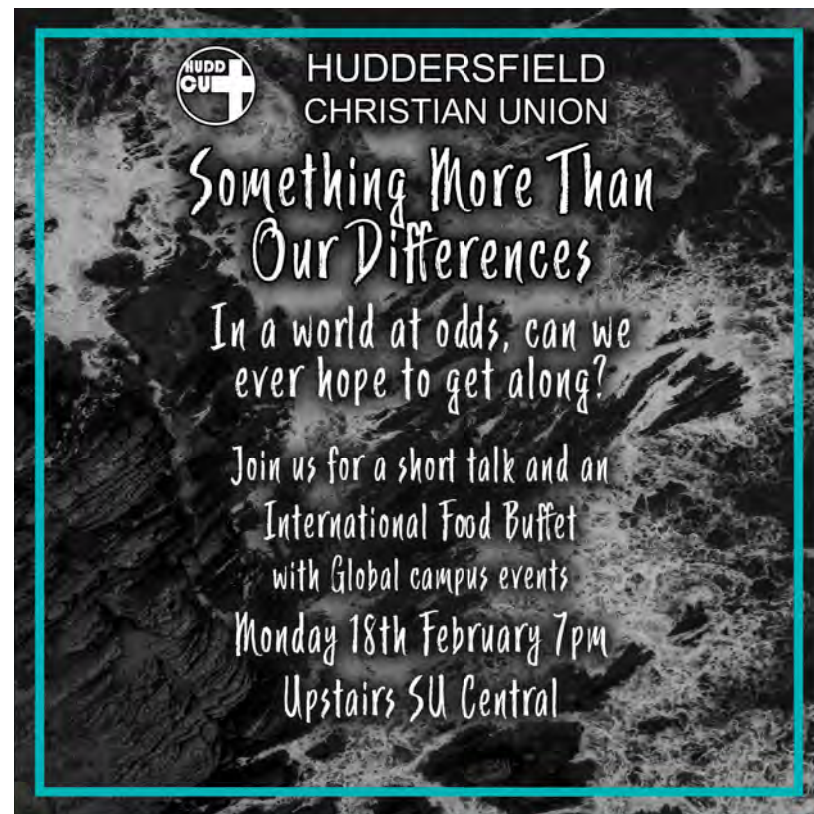
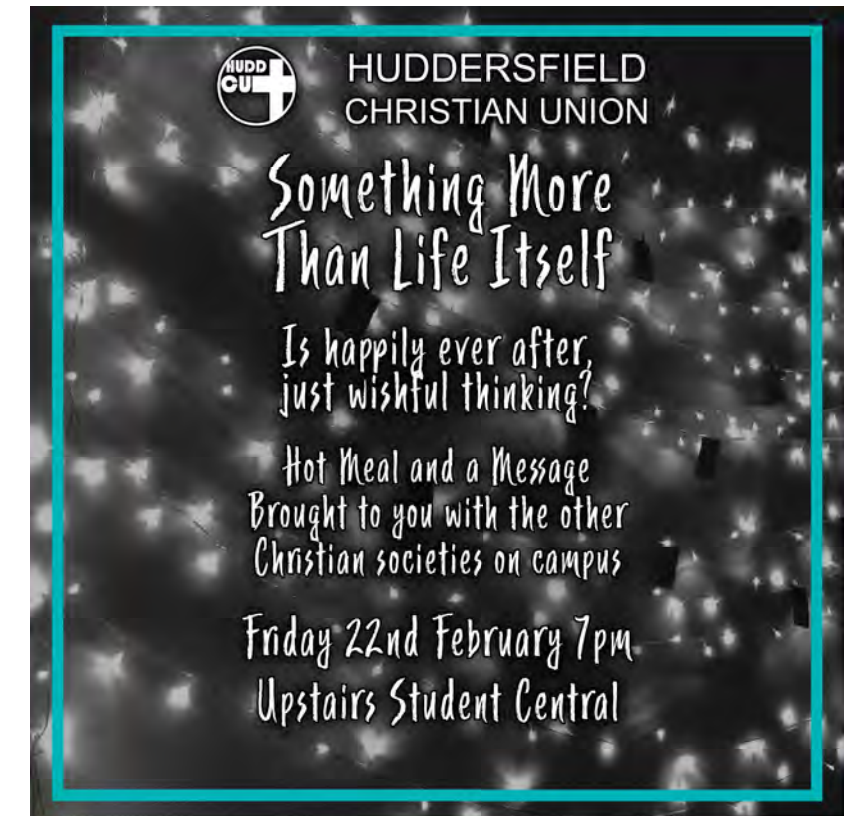
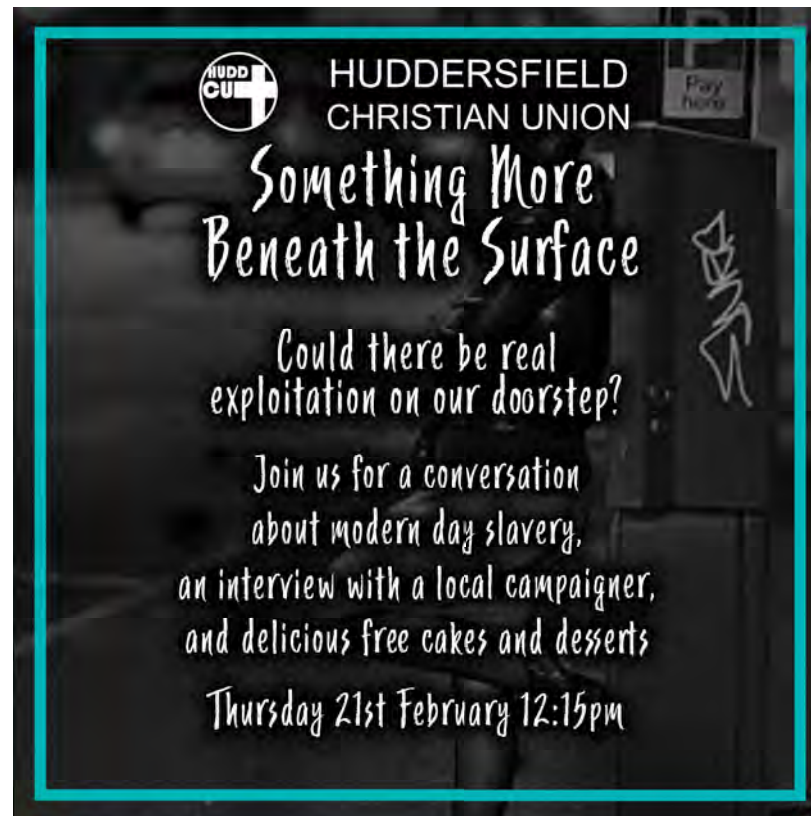
 **All seats sponsored**

Bringing the whole of Kirklees borough together

Through out University I have had the opportunity to support different groups with graphic design. This included the Huddersfield Students Union Annual carol concert hosted at the town hall.

GRAPHIC DESIGN



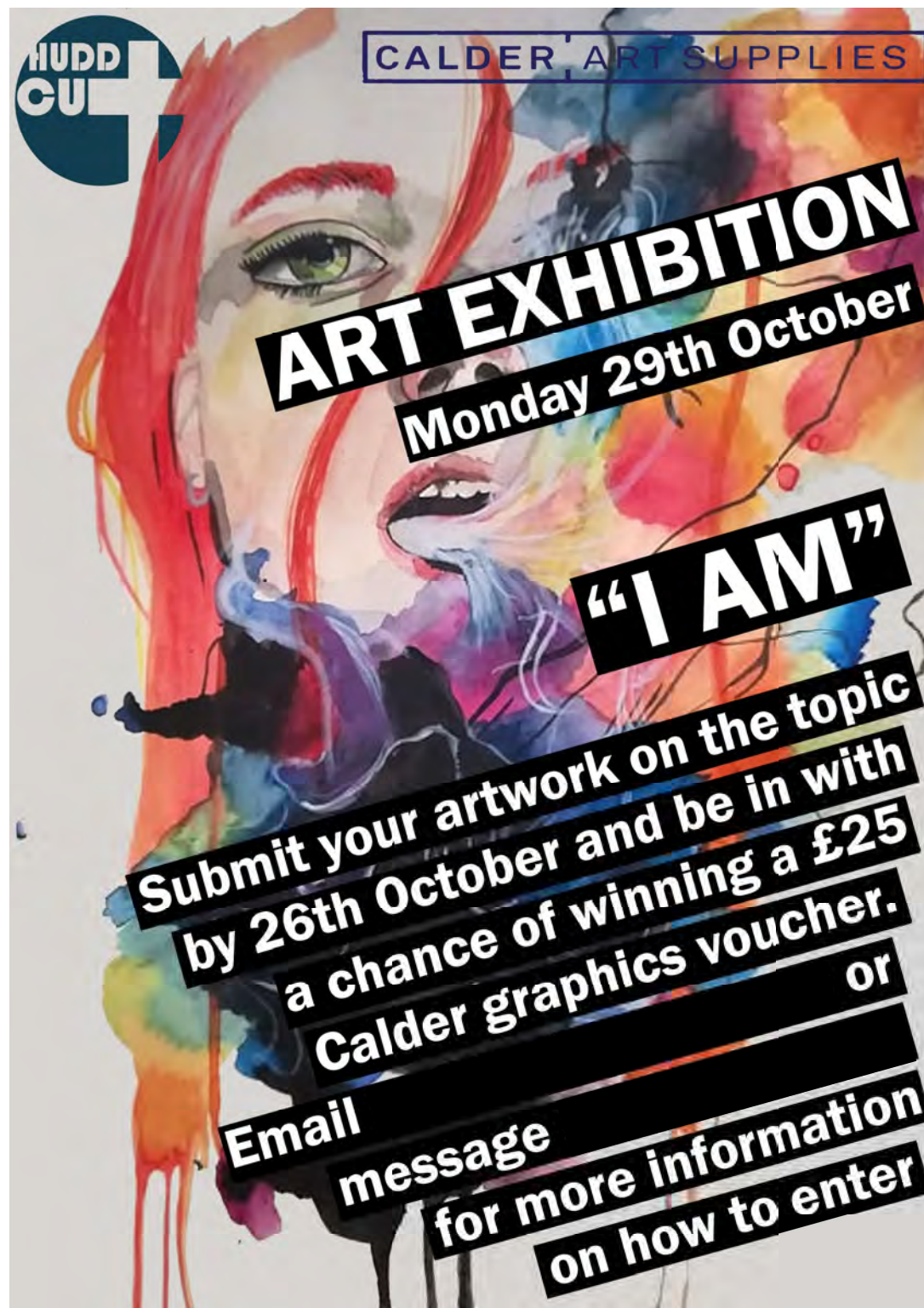
Through out University I have had the opportunity to support different groups with graphic design. This included flyers and social media designs for an annual events week hosted by the Huddersfield Christian Union.

GRAPHIC DESIGN



Through out University I have had the opportunity to support different groups with graphic design. This included flyers and social media designs for events hosted by the Huddersfield Christian Union.

GRAPHIC DESIGN



Through out University I have had the opportunity to support different groups with graphic design. This included flyers and social media designs for events hosted by the Huddersfield Christian Union. This design was taken by original artwork of mine.