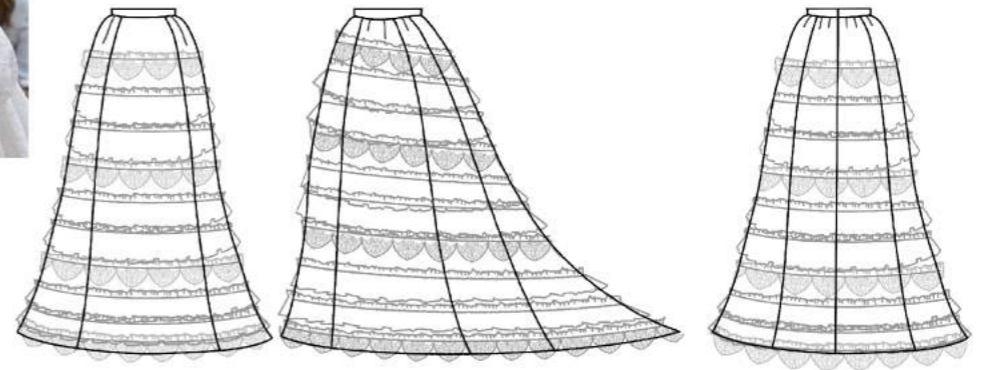
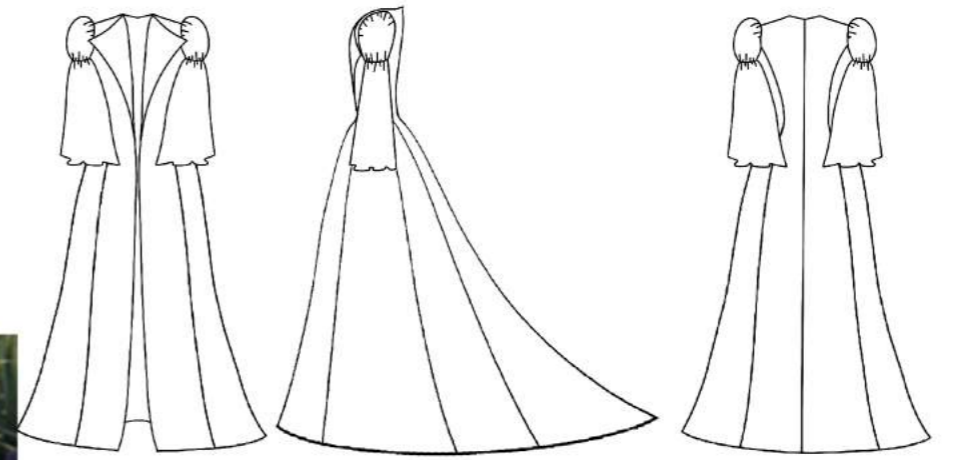
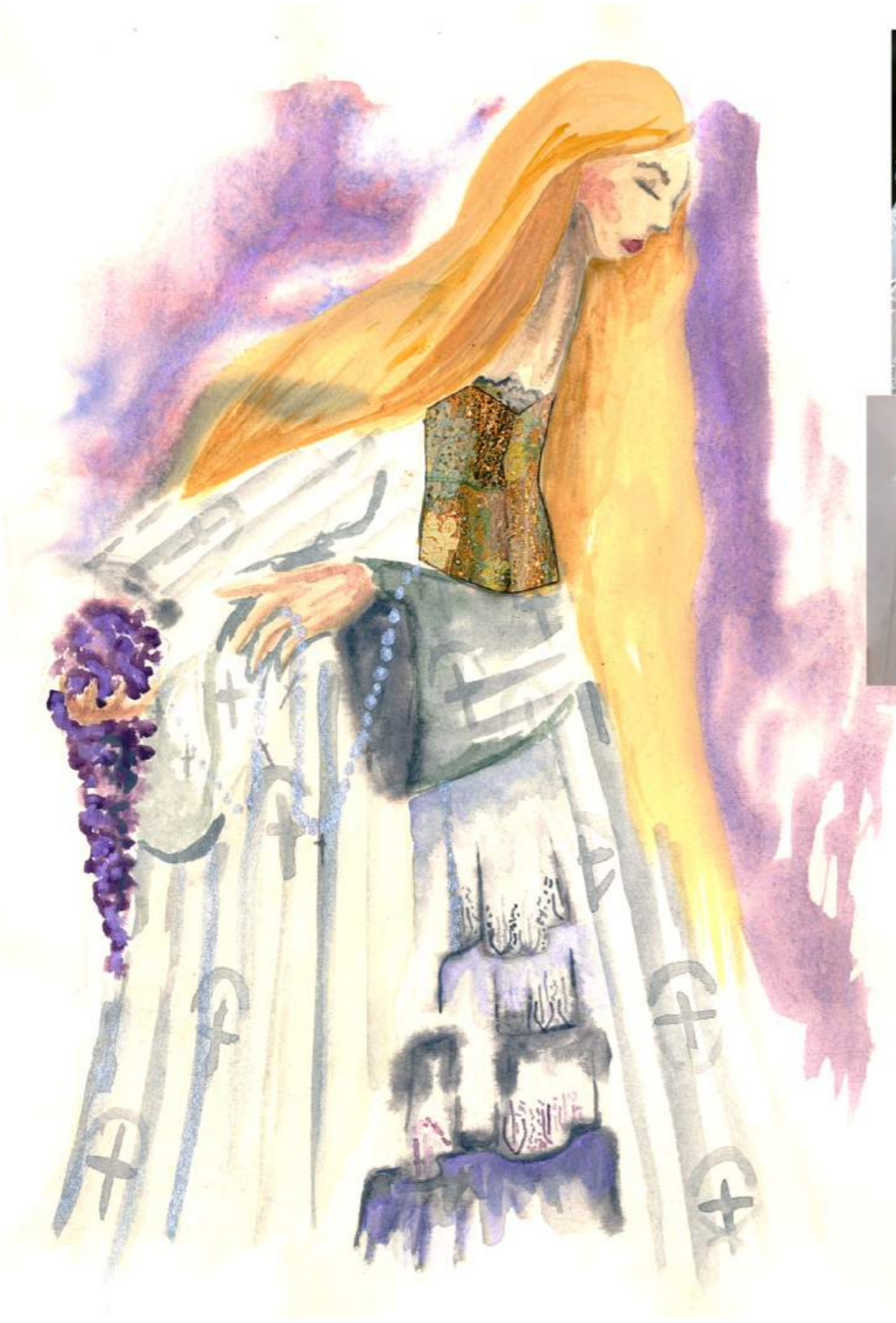




alexandra block

C O S T U M E D E S I G N



alexandra block
C O S T U M E D E S I G N
Dracula "Lucy" for theatre



alexandra block
C O S T U M E D E S I G N
Dracula "Lucy" for film



alexandra block
COSTUME DESIGN
Dracula "Dracula" for theatre



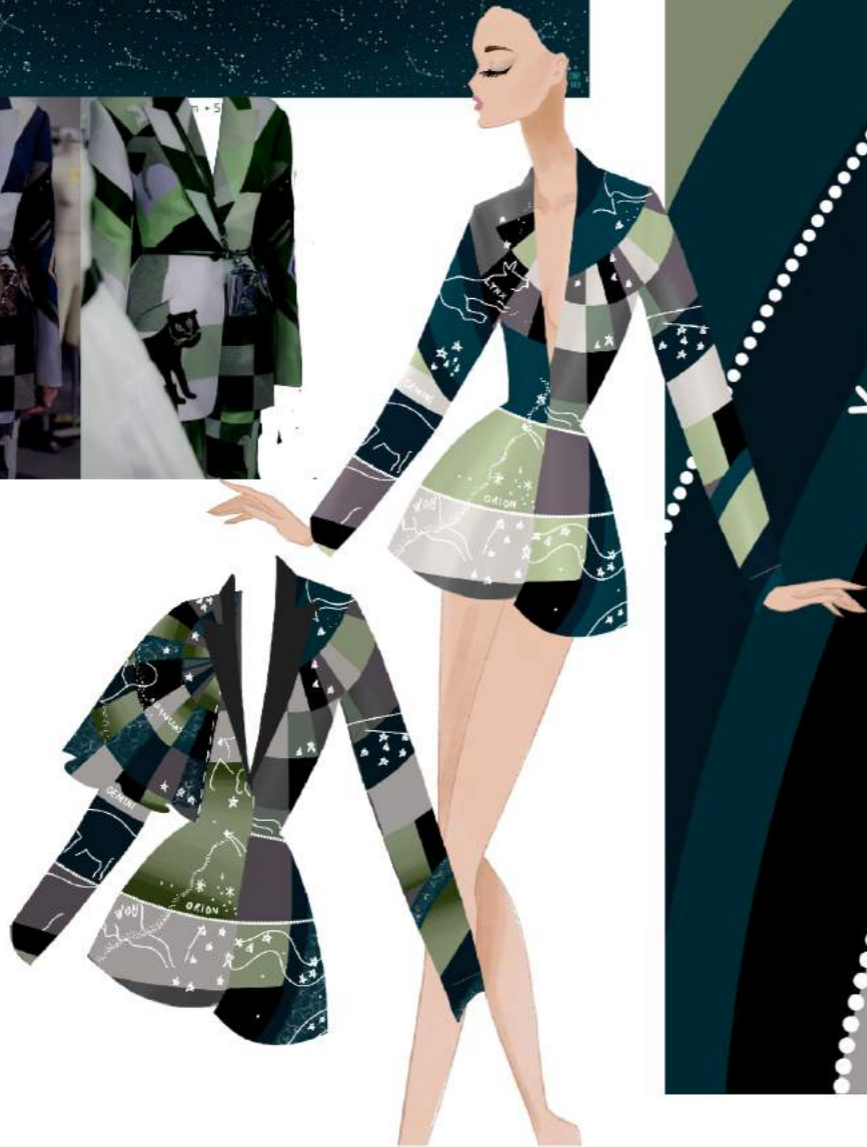
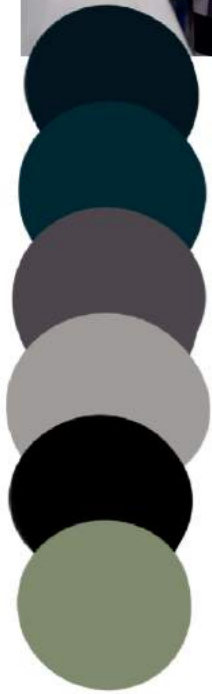
alexandra block
C O S T U M E D E S I G N
Dracula "Van Helsing" for film



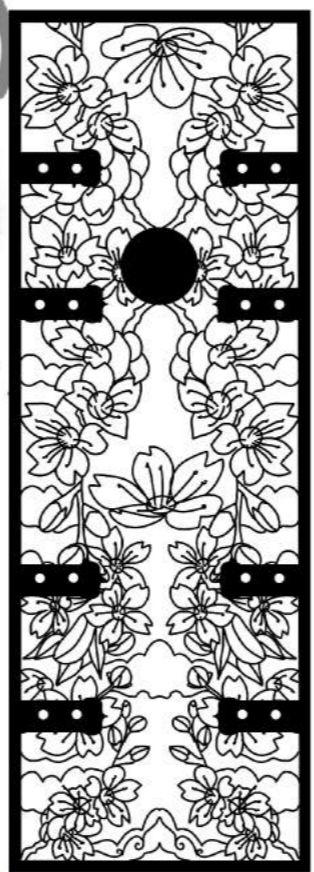
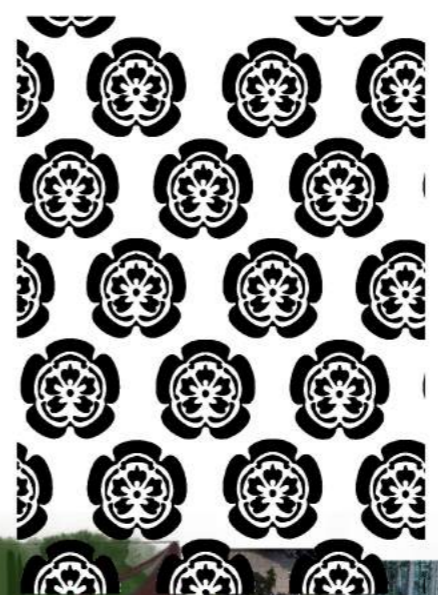
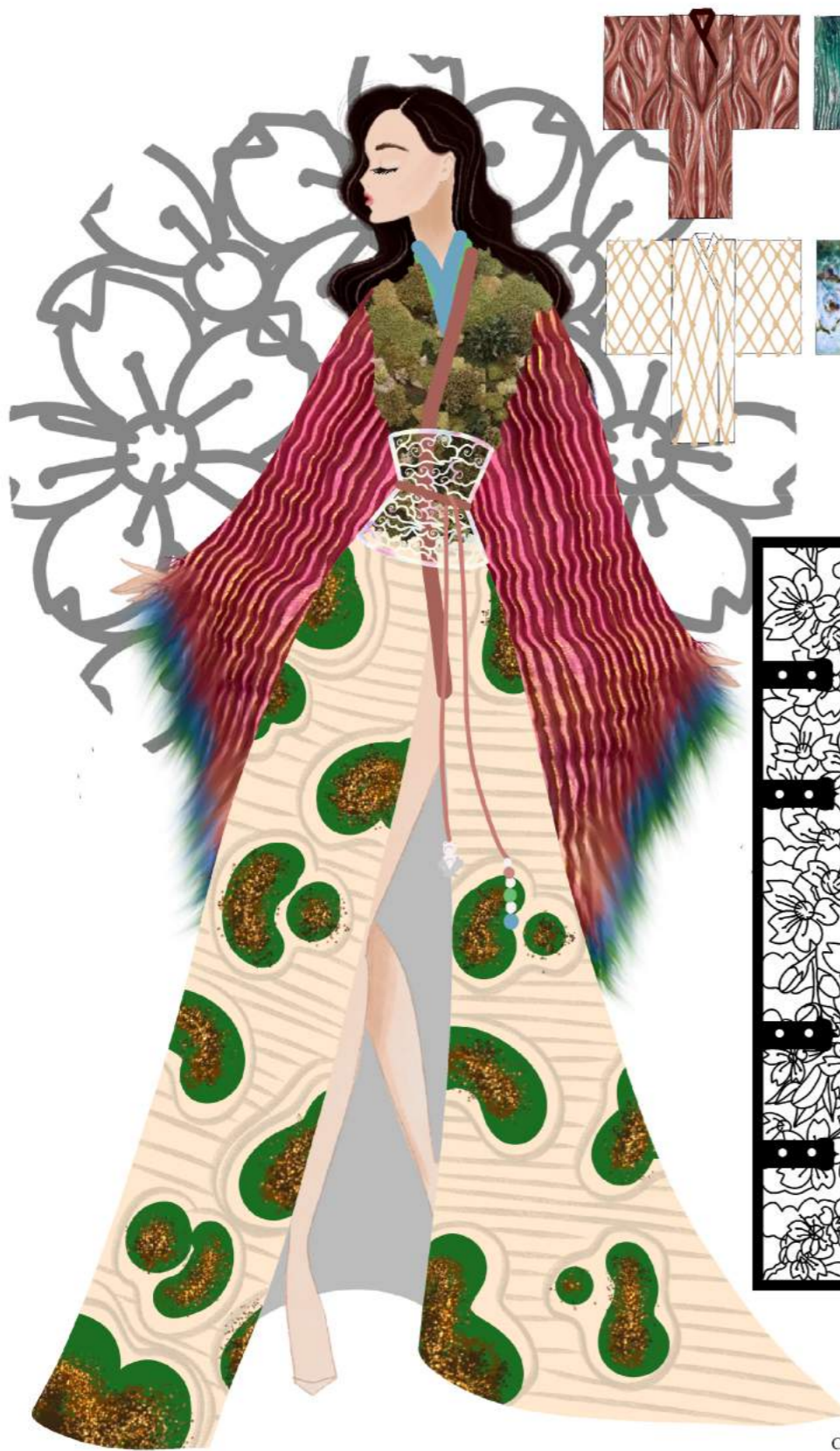
alexandra block

C O S T U M E D E S I G N

Dracula Cast Line Up for film




alexandra block
C O S T U M E D E S I G N
Alexander McQueen Creators Project



alexandra block
C O S T U M E D E S I G N
Skeletal Spector Kimono piece





 - dip dyed or
 more to look
 organic (Jacquard?)

- organza duped to
 match & used and
 printed into relief

- squares pattern
 from the previous
 tube like seeds

- original print of pink
 flamingo ball on the
 front panel covers +
 all flowers on the top

- cardboard wrap
 pin used on green
 organza fabric dyed
 to match & used
 puffs

- altered neckline
 first would need
 more support in the bust

- 2nd looks like quilted?
 possibility of layering
 the top 2



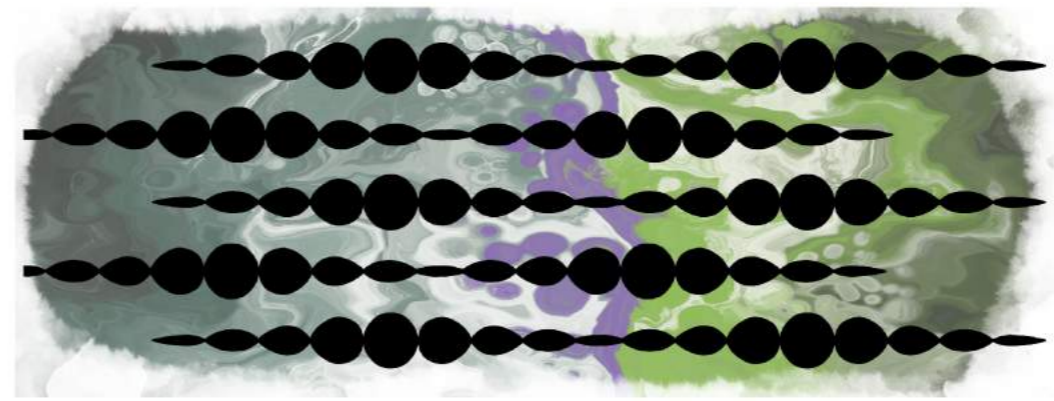
alexandra block
 COSTUME DESIGN
 "The Covent Gardener" Lockdown tutu



alexandra block

C O S T U M E D E S I G N

Pinocchio's Conscious for film



alexandra block
C O S T U M E D E S I G N
Pinocchio "The Cat" for film



alexandra block

C O S T U M E D E S I G N

Pinocchio final cast line up